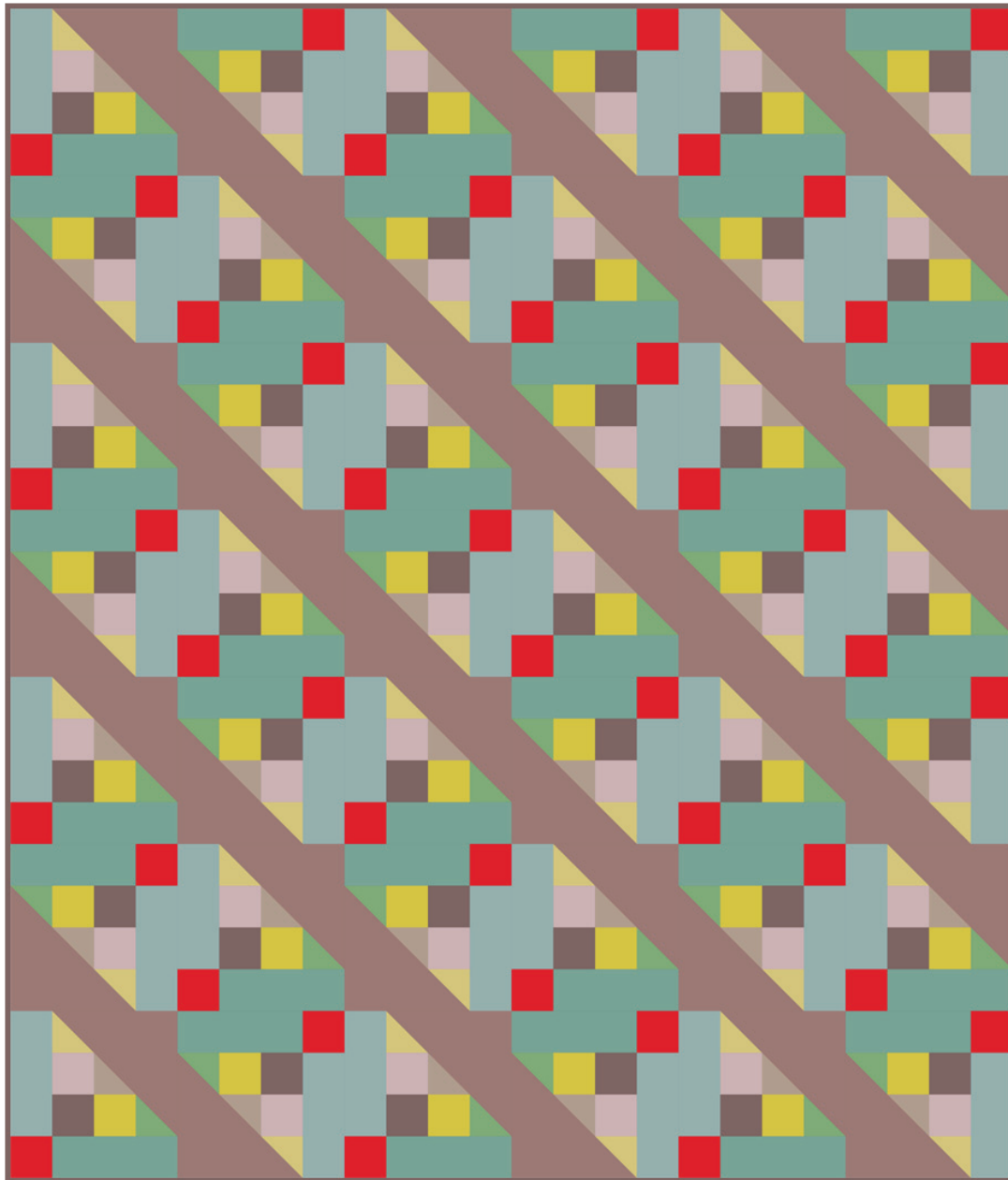


# Craggy Gardens



Featuring fabrics from the **Global Cottons** collection from **STUDIO·e·fabrics**

## Fabric Requirements

(A) 3213-51 .....	1 ¾ yards
(B) 3213-01 .....	1 ¼ yards
(C) 3213-00 .....	1 ¼ yards
(D) 3213-16 .....	½ yard
(E) 3213-90 .....	½ yard
(F) 3213-20 .....	½ yard
(G) 3213-97 .....	½ yard

(H) 3213-99 .....	1 ⅛ yards*
(I) 3213-91 .....	½ yard
(J) 3213-52 .....	½ yard
Backing	
(Your Choice) .....	5 ¼ yards

\*includes binding

## Additional Supplies Needed

Batting 80" x 92"  
Piecing and sewing thread  
Quilting and sewing supplies

Quilt designed by Heidi Pridemore  
Finished Quilt Size 72" x 84"

## Cutting

### Cutting Instructions

*Please Note: All strips are cut across the width of fabric (WOF) from selvage to selvage edge unless otherwise noted.*

WOF= Width of Fabric • LOF = Length of Fabric

#### **Fabric A (3213-51 Ashes of Roses), cut:**

- (6) 9  $\frac{7}{8}$ " x WOF strips. Sub-cut the strips into (21) 9  $\frac{7}{8}$ " squares. Cut each square across one diagonal to make (42) large triangles.

#### **Fabric B (3213-01 Sea Glass), cut:**

- (4) 9  $\frac{1}{2}$ " x WOF strips. Sub-cut the strips into (42) 3  $\frac{1}{2}$ " x 9  $\frac{1}{2}$ " strips.

#### **Fabric C (3213-00 Lake), cut:**

- (4) 9  $\frac{1}{2}$ " x WOF strips. Sub-cut the strips into (42) 3  $\frac{1}{2}$ " x 9  $\frac{1}{2}$ " strips.

#### **Fabric D (3213-16 Flame), cut:**

- (4) 3  $\frac{1}{2}$ " x WOF strips. Sub-cut the strips into (42) 3  $\frac{1}{2}$ " squares.

#### **Fabric E (3213-90 Grelow), cut:**

- (3) 3  $\frac{7}{8}$ " x WOF strips. Sub-cut the strips into (21) 3  $\frac{7}{8}$ " squares. Cut each square across one diagonal to make (42) small triangles.

#### **Fabric F (3213-20 Pearl), cut:**

- (4) 3  $\frac{1}{2}$ " x WOF strips. Sub-cut the strips into (42) 3  $\frac{1}{2}$ " squares.

#### **Fabric G (3213-97 Greige), cut:**

- (3) 3  $\frac{7}{8}$ " x WOF strips. Sub-cut the strips into (21) 3  $\frac{7}{8}$ " squares. Cut each square across one diagonal to make (42) small triangles.

#### **Fabric H (3213-99 True Taupe), cut:**

- (4) 3  $\frac{1}{2}$ " x WOF strips. Sub-cut the strips into (42) 3  $\frac{1}{2}$ " squares.
- (8) 2  $\frac{1}{2}$ " x WOF strips for binding

#### **Fabric I (3213-91 Citrus Yellow), cut:**

- (4) 3  $\frac{1}{2}$ " x WOF strips. Sub-cut the strips into (42) 3  $\frac{1}{2}$ " squares.

#### **Fabric J (3213-Sunny Aqua), cut:**

- (3) 3  $\frac{7}{8}$ " x WOF strips. Sub-cut the strips into (21) 3  $\frac{7}{8}$ " squares. Cut each square across one diagonal to make (42) small triangles.

#### **Backing (Your Choice), cut:**

- (2) 92" x WOF strips. Sew the strips together and trim to make 80" x 92" piece for the backing.

Sew using a  $\frac{1}{4}$ " seam allowance with right sides together (RST) unless otherwise indicated. Always press towards the darker fabric while assembling, unless otherwise noted by the arrows.

## Block Assembly

1. Sew together (1)  $3\frac{1}{2}$ " Fabric H square, (1)  $3\frac{1}{2}$ " F square and (1) Fabric E small triangle to make Unit One (Fig. 1).
2. Sew together (1)  $3\frac{1}{2}$ " Fabric I square and (1) Fabric G small triangle to make Unit Two (Fig. 2).
3. Sew together (1) Unit One, (1) Unit Two and (1) Fabric J small triangle to make (1) triangle unit (Fig. 3).
4. Sew (1) Fabric A Large triangle to the triangle unit to make (1)  $9\frac{1}{2}$ " square (Fig. 4).

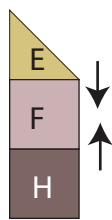


Fig. 1

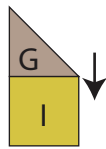


Fig. 2

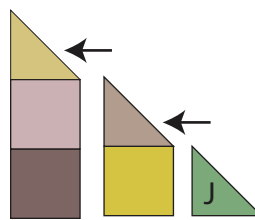


Fig. 3

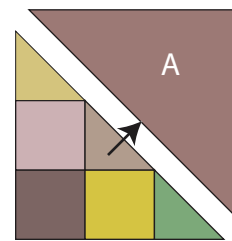


Fig. 4

5. Sew (1)  $3\frac{1}{2}$ " x  $9\frac{1}{2}$ " Fabric C strip to the pieced side of the  $9\frac{1}{2}$ " square (Fig. 5).
6. Sew (1)  $3\frac{1}{2}$ " Fabric D square to one end of (1)  $3\frac{1}{2}$ " x  $9\frac{1}{2}$ " Fabric B strip (Fig. 6).
7. Sew the D/B strip to the pieced bottom of the  $9\frac{1}{2}$ " square to complete one  $12\frac{1}{2}$ " Block (Fig. 7).
8. Repeat Steps 1-7 to make (42) blocks.

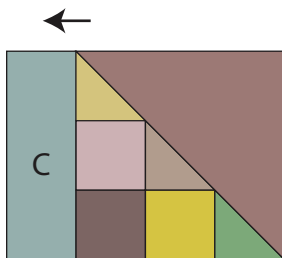


Fig. 5

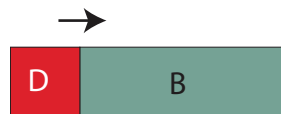


Fig. 6

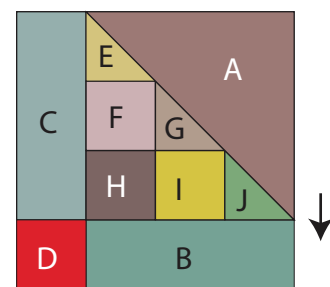


Fig. 7

make 42

## Quilt Top

*(Refer to the Quilt Layout for the block orientation.)*

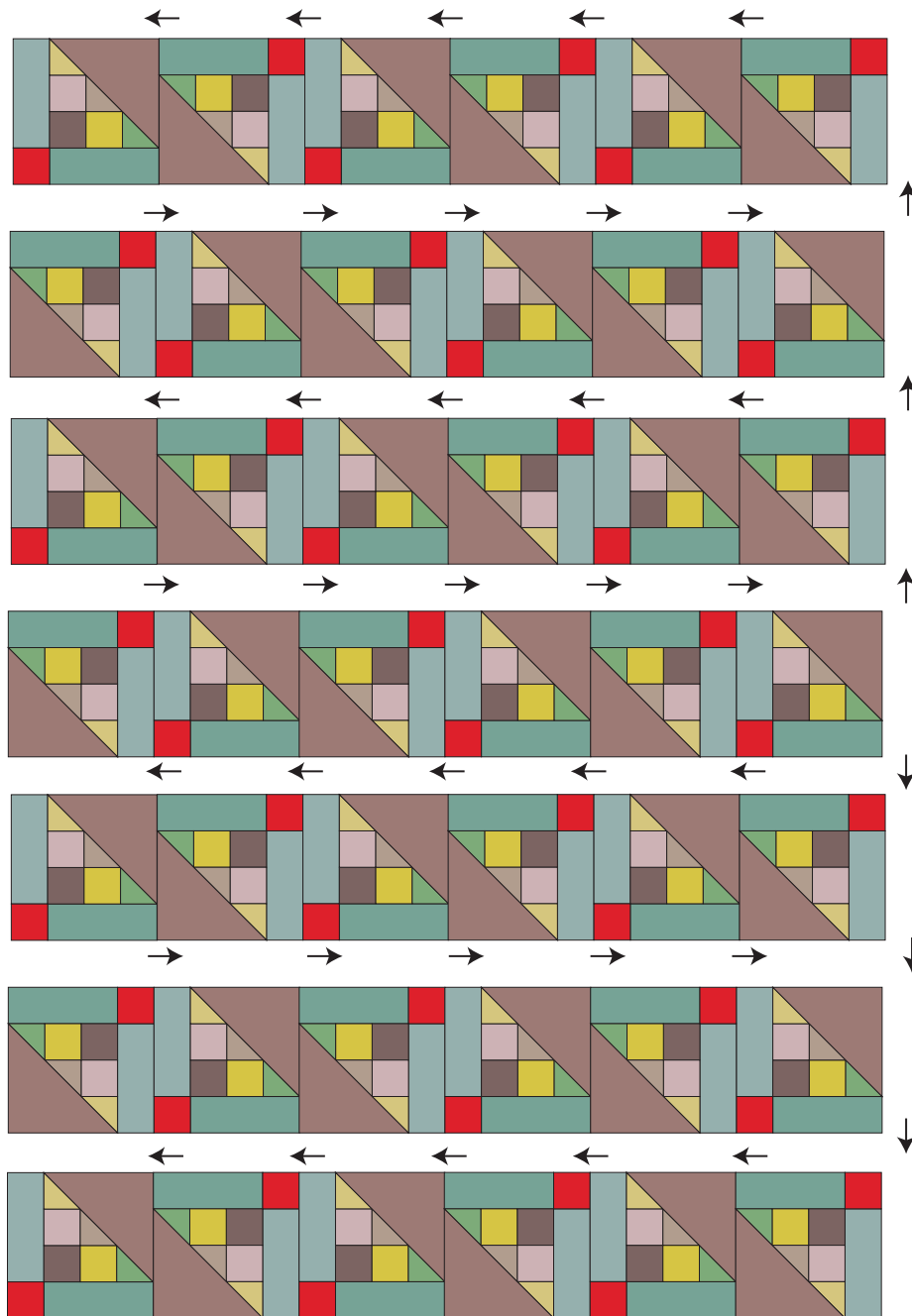
9. Sew the blocks together into seven rows with six blocks in each row.
10. Sew the rows together to make the quilt top.

11. Sew the (2) 92" x WOF strips together and trim to make (1) 80" x 92" backing piece.

12. Press the quilt top and backing well. Layer backing (wrong side up), batting, pressed quilt top (right side up) and baste. Quilt as desired and trim excess batting and backing when quilting is complete.

13. Cut the ends of the (8) Fabric H binding strips at a 45-degree angle and sew end to end to make one continuous piece of binding. Fold in half lengthwise and press wrong sides together.

14. Sew the binding to the front of the quilt, raw edges together. Turn the folded edge to the back, and hand stitch in place.



## Quilt Layout